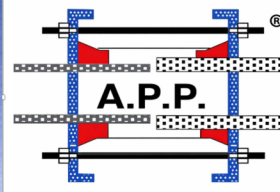


APP-OZL/FBR

Pipe Spool

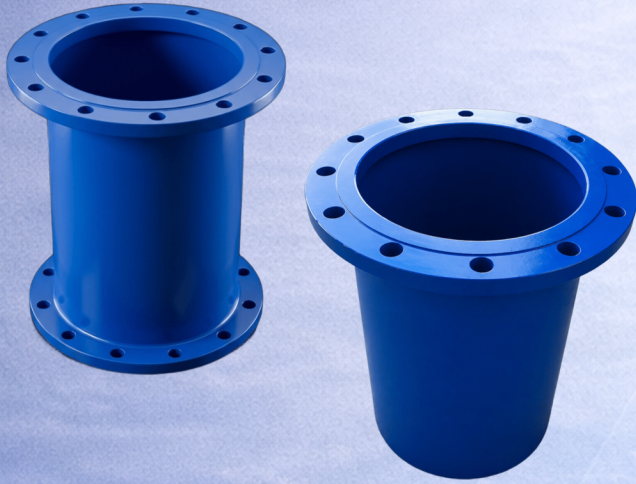


hedef
Engineering Services
Industry and Trade Inc.

Pipeline Extension and Distance Adjustment Solution

APP Pipe Spools are used to provide transitions between equipment in valve chambers, pump stations, and pipeline systems, to extend pipeline length, or to fill gaps between fixed connection points.

They are manufactured in custom lengths (L) according to project requirements with high precision.



KEY ADVANTAGES

- ▶ High-precision manufacturing
- ▶ Easy flanged connection
- ▶ High strength and reliable sealing performance
- ▶ Custom production according to project requirements
- ▶ Available in various lengths and diameters
- ▶ Optional reduction versions available for all required diameters
- ▶ Provides distance adjustment and alignment in pipeline systems

PARTS AND MATERIAL SPECIFICATIONS

No	Component	Material and Technical Details
1	Pipe	ST 37 STEEL. High-strength, load-bearing structure.
2	Flange	ST 37 Steel. Compatible with multiple flange standards.
3	Reduction (Optional)	ST 37 STEEL. Superior quality in welding craftsmanship.
4	Coating	Epoxy/Thermoplastic Coating. Durable protection, extended longevity.

AREAS OF APPLICATION

- Potable water and infrastructure pipelines
- Industrial pipeline systems
- Valve and pump connections
- Repair, maintenance, and rehabilitation works
- Pipeline installation and retrofit applications