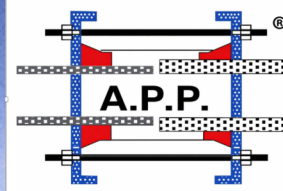


# APP-PS

## Stainless Steel Coupling

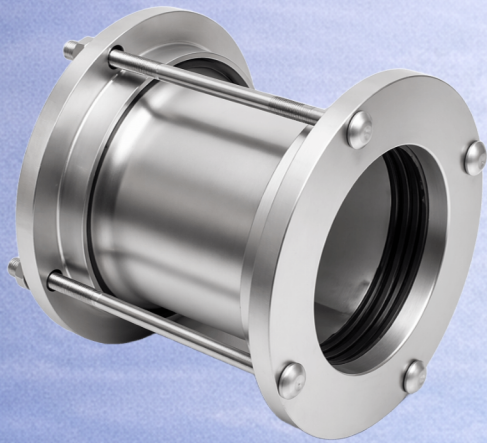


**hedef**  
Engineering Services  
Industry and Trade Inc.

### Professional Connection for High Corrosion Resistance Lines

APP Stainless Couplings are specifically designed to connect stainless steel pipelines where corrosion resistance is critical or to repair existing malfunctions. It guarantees sealing and longevity in aggressive environments such as food, chemical, and seawater applications.

### KEY ADVANTAGES



- ▶ Superior corrosion resistance with 100% stainless steel structure
- ▶ Resistance to chemical and aggressive environments
- ▶ Compatibility with different pipe types (Ductile Iron, Cast Iron, Steel, AC, PVC, PE, etc.) with flexible use via wide diameter tolerance
- ▶ Structure that absorbs angular deviations up to 6° and ground movements
- ▶ Expansion and contraction tolerance up to 10 mm
- ▶ Easy assembly in challenging conditions, even underwater
- ▶ Fast installation with a single wrench, low labor costs

### PARTS AND MATERIAL SPECIFICATIONS

No	Component	Material and Technical Details
1	Sleeve	AIS I304 / 316 Stainless Steel. Durable carrier housing with high strength.
2	End Rings	AISI 304 / 316 Stainless Steel. Pressure caps that exert force on the gasket.
3	Tee Bolts/Bolts	AISI 304 / 316 Stainless Steel. Exceptional corrosion resistance.
4	Conical Gasket	EPDM / NBR. Pressure-sensitive sealing technology.
5	Nuts and Washers	AISI 304 / 316 Stainless Steel. Reliable locking mechanism.
6	Coating	Epoxy/Thermoplastic Coating. Durable protection, extended longevity.

### AREAS OF APPLICATION

- Pharmaceutical and chemical industry
- Seawater treatment and desalination plants
- Wastewater and aggressive fluid lines
- Paper and cellulose factories
- Stainless steel valve and pump connections