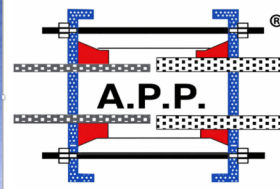


APP-K/PE

PE End Cap



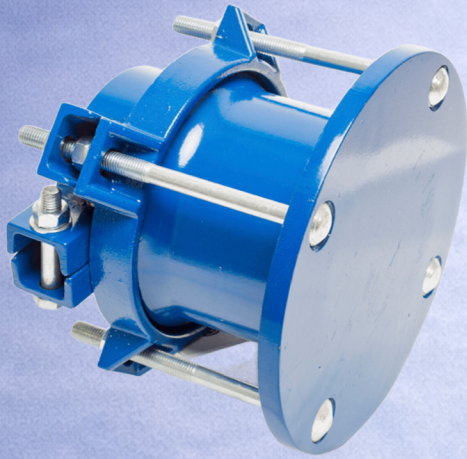
hedef
Engineering Services
Industry and Trade Inc.

Secure and Leak-Tight Blanking for Polyethylene Pipelines: APP Engineering

APP PE End Caps are developed to safely and securely terminate PE / HDPE pipelines with full leak-tight performance. With a gripping and sealing system specifically designed for the flexible nature of PE pipes, they deliver high performance in both temporary and permanent line closure applications.

KEY ADVANTAGES

- ▶ Flanged connection and blanking solution for PE / HDPE pipelines
- ▶ Direct integration with valves and equipment when required
- ▶ Optimized gripping system specifically designed for PE pipes
- ▶ Easy installation even under harsh and underwater conditions
- ▶ Fast and simple on-site installation
- ▶ Long service life with minimal maintenance
- ▶ Reliable sealing performance under high pressure
- ▶ Cost-effective solution reducing stock variety



PARTS AND MATERIAL SPECIFICATIONS

| No | Component Name | Material and Technical Details |
|----|------------------|--|
| 1 | Sleeve | ST 37 STEEL. High-strength, load-bearing structure. |
| 2 | End Rings | Ductile Iron (GGG 40/50) / ST 37. Gasket pressure covers. |
| 3 | Blind Flange | ST 37 Steel. Exceptional resistance to high pressure. |
| 4 | Grip Rings | ST 37 Steel. Ensures axial stability of the pipe. |
| 5 | Tee Bolts/Bolts | Galvanized 8.8 Steel / AISI 304 / 316 Stainless Steel. Exceptional corrosion |
| 6 | Conical Gasket | EPDM / NBR. Pressure-sensitive sealing technology. |
| 7 | Nuts and Washers | Galvanized 8.8 Steel / AISI 304/316 Steel. Reliable locking mechanism. |
| 8 | Coating | Epoxy/Thermoplastic Coating. Durable protection, extended longevity. |

AREAS OF APPLICATION

- End-of-line termination applications in PE pipelines
- Temporary line closure operations
- Pressure testing of newly installed PE pipelines
- Branch outlets reserved for future expansion
- Pipeline section isolation in case of failures
- Potable water and infrastructure pipelines