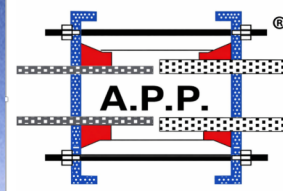


APP-KTK/PR

Tapped Outlet Clamp

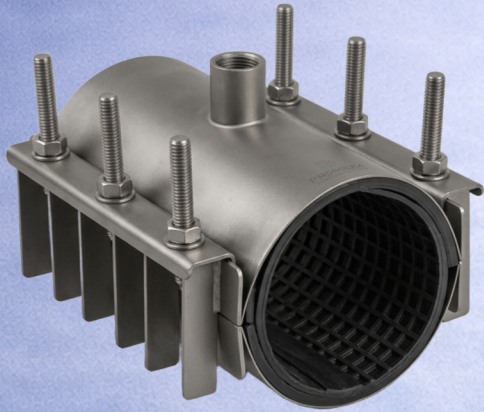


hedef
Engineering Services
Industry and Trade Inc.

Repair and Branching in a Single Unit: APP Smart Solutions

APP Tapped Outlet Clamps are designed to repair pipeline damage while simultaneously providing a new branch (outlet) connection—all within a single product. Thanks to their design allowing installation without interrupting water flow, the integrated threaded outlet enables fast and secure connections for valves, service lines, and instrumentation.

KEY ADVANTAGES



- ▶ Combined leakage repair and branching solution in a single product
- ▶ Intervention without interrupting water flow
- ▶ Easy connection via integrated threaded outlet (tapping connection)
- ▶ Suitable for valve, flow meter, and equipment installation
- ▶ High sealing performance
- ▶ Compatible with various pipe materials (DI, Steel, Cast iron, AC, PVC, PE, GRP, etc.)
- ▶ Fast and practical on-site installation

PARTS AND MATERIAL SPECIFICATIONS

No	Component	Material and Technical Details
1	Body	AISI 304 / 316 Stainless Steel. Exceptional corrosion resistance.
2	Side Support Plate	AISI 304 / 316 Stainless Steel. Welded or integrated design within the body.
3	Bolt Support Rib	AISI 304 / 316 Stainless Steel. Robust construction.
4	Locking Plate	AISI 304 / 316 Stainless Steel. Reliable locking mechanism.
5	Reinforcement Plate	Constructed from AISI304/316 stainless steel. Prevents deformation of the product.
6	Wafer Type Gasket	EPDM / NBR. Pressure-sensitive sealing technology.
7	Bolts and Studs	AISI 304 / 316 Stainless Steel. Teflon-coated. High tensile strength.
8	Nuts and Washers	AISI 304 / 316 Stainless Steel. Robust construction.
9	Priz Manşon	AISI 304 / 316 Stainless Steel. Incorporated into the body (in the specified

AREAS OF APPLICATION

- Potable water transmission and distribution pipelines
- Industrial pipeline systems
- New service connection (subscriber) branching
- Service line renewal on damaged pipelines
- Air release (air valve) connection points
- Pressure gauge and instrumentation installations