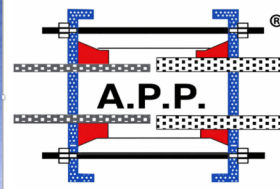


APP-KTK/FL

Flanged Outlet Clamp

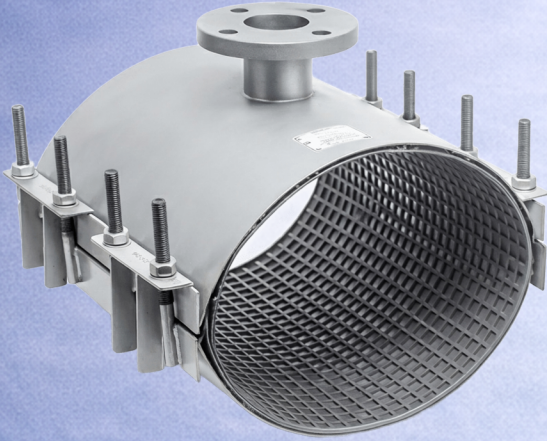


hedef
Engineering Services
Industry and Trade Inc.

Direct Flanged Branching from Live Pipelines: APP Professional Solution

APP Flanged Outlet Clamps are designed to repair localized damage on pipelines while simultaneously enabling high-capacity branching connections. With the integrated flanged outlet structure, they allow direct installation of flanged equipment such as valves, air valves, and fire hydrants onto live pipelines—without interrupting water flow.

KEY ADVANTAGES



- ▶ Live pipeline connection and branching from transmission lines
- ▶ Combined leakage repair and flanged connection in a single product
- ▶ Intervention without interrupting water flow
- ▶ Flanged outlet for direct connection of valves, air valves, flow meters, and equipment
- ▶ Compatible with various pipe materials (DI, AC, Cast iron, Steel, PVC, PE, etc.)
- ▶ Fast and practical on-site installation
- ▶ Durable structure with long service life

PARTS AND MATERIAL SPECIFICATIONS

No	Component	Material and Technical Details
1	Body	AISI 304 / 316 Stainless Steel. Exceptional corrosion resistance.
2	Side Support Plate	AISI 304 / 316 Stainless Steel. Welded or integrated design within the body.
3	Bolt Support Rib	AISI 304 / 316 Stainless Steel. Robust construction.
4	Locking Plate	AISI 304 / 316 Stainless Steel. Reliable locking mechanism.
5	Reinforcement Plate	Constructed from AISI304/316 stainless steel. Prevents deformation of the
6	Wafer Type Gasket	EPDM / NBR. Pressure-sensitive sealing technology.
7	Bolts and Studs	AISI 304 / 316 stainless steel. Teflon-coated. High tensile strength.
8	Nuts and Washers	AISI 304 / 316 Stainless Steel. Robust construction.
9	Outlet Pipe and Flange	AISI 304 / 316 Stainless Steel. Incorporated into the body (in the specified diameter).

AREAS OF APPLICATION

- Potable water and infrastructure pipelines
- Industrial pipeline systems
- Valve and equipment connections
- Flow meter and instrumentation installations
- Air release (air valve) connection points
- Flanged branching from pressurized pipelines