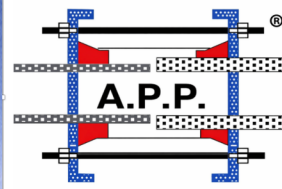


# APP-KTK

## Easy Repair Clamp

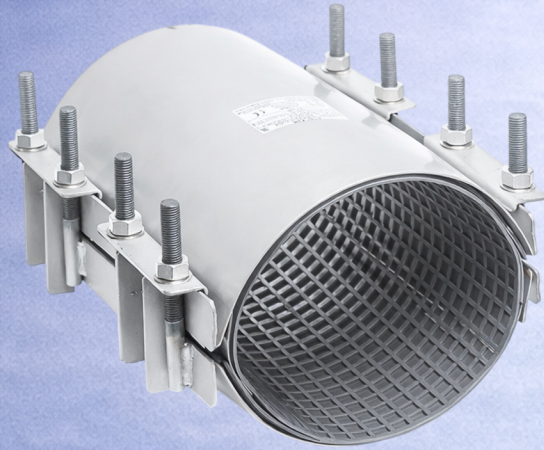


**hedef**  
Engineering Services  
Industry and Trade Inc.

### Fast Intervention, Uninterrupted Line Management: APP Easy Repair Technology

APP Easy Repair Clamps are designed to repair leaks, cracks, punctures, and corrosion damage in pipelines without cutting the pipe. Thanks to its structure that can be applied without interrupting the water flow, it provides maximum speed and operational continuity in maintenance and repair processes. With its two-piece design, it is safely applied to all types of pipes.

### KEY ADVANTAGES



- ▶ Fast repair without interrupting water flow
- ▶ Effective solution for holes, circumferential and longitudinal cracks
- ▶ High sealing performance
- ▶ Compatible with various pipe materials (DI, AC, Cast iron, Steel, PVC, PE, etc.)
- ▶ Available in a wide range of diameters and clamp lengths
- ▶ Fast and practical on-site installation
- ▶ Durable structure with long service life

### PARTS AND MATERIAL SPECIFICATIONS

No	Component	Material and Technical Details
1	Body	AISI 304 / 316 Stainless Steel. Exceptional corrosion resistance.
2	Side Support Plate	AISI 304 / 316 Stainless Steel. Welded or integrated design within the
3	Bolt Support Rib	AISI 304 / 316 Stainless Steel. Robust construction.
4	Locking Plate	AISI 304 / 316 Stainless Steel. Reliable locking mechanism.
5	Reinforcement Plate	AISI 304 / 316 Stainless Steel. The one-piece gasket prevents
6	Wafer Type Gasket	EPDM / NBR. Pressure-sensitive sealing technology.
7	Bolts and Studs	AISI 304 / 316 Stainless Steel. Teflon-coated. High tensile strength.
8	Nuts and Washers	AISI 304 / 316 Stainless Steel. Robust construction.

### AREAS OF APPLICATION

- Potable water transmission and distribution pipelines
- Industrial pipeline systems
- Agricultural irrigation lines
- Treatment plants and marine discharge lines
- Emergency leak and failure points
- Maintenance and repair applications