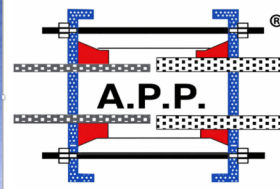


# APP-KPLN

## Repair Coupling

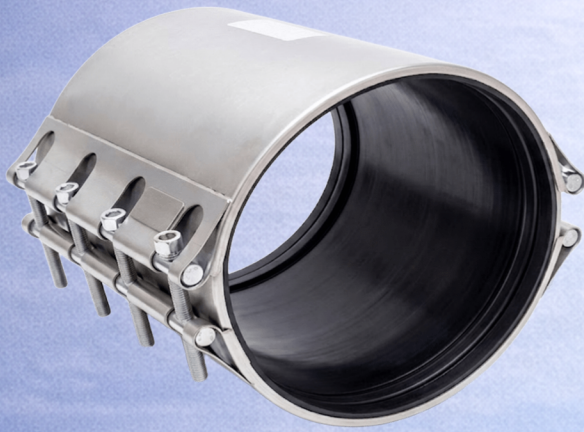


**hedef**  
Engineering Services  
Industry and Trade Inc.

### Continuous Water Flow Repair, High-Pressure Resistance: APP Engineering

APP Repair Couplings provide a robust and long-lasting solution for repairing leaks and damages in pipelines—even under high-pressure conditions—without interrupting water flow.

They also ensure maximum sealing performance and angular deflection tolerance when connecting pipes of the same diameter and type.



### KEY ADVANTAGES

- ▶ Safe use in high-pressure pipelines
- ▶ Fast repair without interrupting water flow
- ▶ Permanent solution for leaks and seepage
- ▶ Secure connection of pipes with the same diameter and type
- ▶ Corrosion-resistant structure
- ▶ Fast and easy on-site installation
- ▶ Long service life with minimal maintenance

### PARTS AND MATERIAL SPECIFICATIONS

No	Component Name	Material and Technical Details
1	Body	AISI 304 / 316 Stainless Steel. Exceptional corrosion resistance.
2	Connection Shaft	Automatic Steel / AISI 304 / 316 Stainless Steel. Robust construction.
3	Vacuum Support Plate	AISI 304 / 316 Stainless Steel. Robust construction.
4	Lip Gasket	EPDM / NBR. Pressure-sensitive sealing technology.
5	Bolts and Studs	12.9 / 8.8 Steel / AISI 304 / 316 Stainless Steel. Dichromate Coated.
6	Nuts and Washers	AISI 304 / 316 Stainless Steel. Robust construction.

### AREAS OF APPLICATION

- Potable water transmission and distribution pipelines
- Industrial pipeline systems
- High-pressure networks and pipelines
- Treatment plants and marine discharge lines
- Emergency leak and failure points
- Maintenance and repair applications
- Pipe joining applications
- Pipeline renewal and rehabilitation projects